

# CASEWARE CONNECTOR



Most important features

April 2014

# What is Connector?

- Connector is an ADD-IN for Microsoft Word and Microsoft Excel that enables CaseWare users to LINK DATA between Working Papers and Microsoft documents.
- Links may be used to retrieve information from Working Papers database such as account numbers, descriptions, balances and other client-related information.

# Features

## Easy File Linking

You can use Connector to quickly link a new or existing Excel or Word file.

# Features

## Flexible Link Options

Connector lets you link information from the client profile, accounts, mappings, leadsheets, groupings, user defined information, document information, tax export code and more.

# Features

## Balance Customization

Choose your period type, number format, rounding type, foreign exchange and more.

# Features

## Link Organization

The Links Path dialog lets you check existing links and reassign links from one file to another.

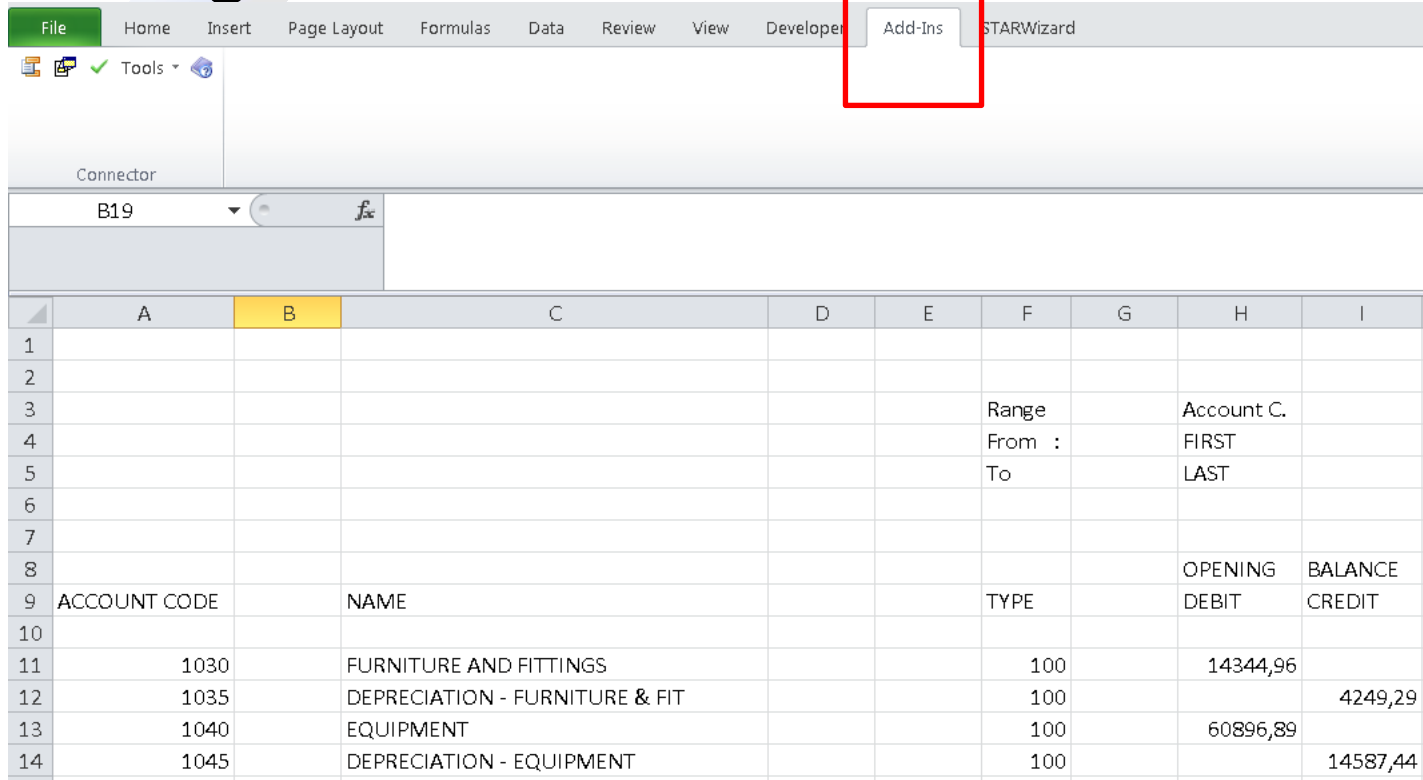
# Features

## Drill-Down Functionality

The drilldown automatically opens the appropriate area of the Working Papers client file based on the links in the selected formula in the Word or Excel document.

# How does it work?

- Drag and drop an excel file in document manager



The screenshot shows the Microsoft Excel interface. The ribbon at the top includes tabs for File, Home, Insert, Page Layout, Formulas, Data, Review, View, Developer, Add-Ins (highlighted with a red box), and STARWizard. Below the ribbon, there is a Connector pane with a dropdown menu set to 'B19'. The main spreadsheet area displays a table with the following data:

	A	B	C	D	E	F	G	H	I
1									
2									
3						Range		Account C.	
4						From :		FIRST	
5						To		LAST	
6									
7									
8								OPENING	BALANCE
9	ACCOUNT CODE		NAME			TYPE		DEBIT	CREDIT
10									
11	1030		FURNITURE AND FITTINGS			100		14344,96	
12	1035		DEPRECIATION - FURNITURE & FIT			100			4249,29
13	1040		EQUIPMENT			100		60896,89	
14	1045		DEPRECIATION - EQUIPMENT			100			14587,44



# Connector toolbar

Consists of shortcut buttons and tools menu



- ▶ Connector Linkage dialog Connector (  )
- ▶ Document dialog (  )
- ▶ Tickmark dialog (  )
- ▶ Tools menu ( Tools ▾ )
- ▶ **Help** (  ) - Launches the Connector Help.

# Linkage Dialog

Simply click on the selected item in the results pane and the link formula is automatically created

1. Available Caseware categories
2. Linkage options to filter or refine the result set and format values.
3. Results pane based selection above
4. Resulting linkage formula.

Category

Engagement Properties

Document Information

User Defined

Class Type

Accounts

Mappings

L/S

Group 2

Group 3

Group 4

Default Entity

Default Period

Current Year

Current Format

Report Balance

N/A

No

No Rounding

Number	Description	Extended Description	Value	Type
1010	Goodwill	Goodwill	282,40	
1015	Amortisation of goodwill	Amortisation of goodwill	(113,49)	
1020	Computer software	Computer software	282,40	
1025	Amortisation of software	Amortisation of software	(118,49)	
1020	Research and development	Research and development	540,40	

B14

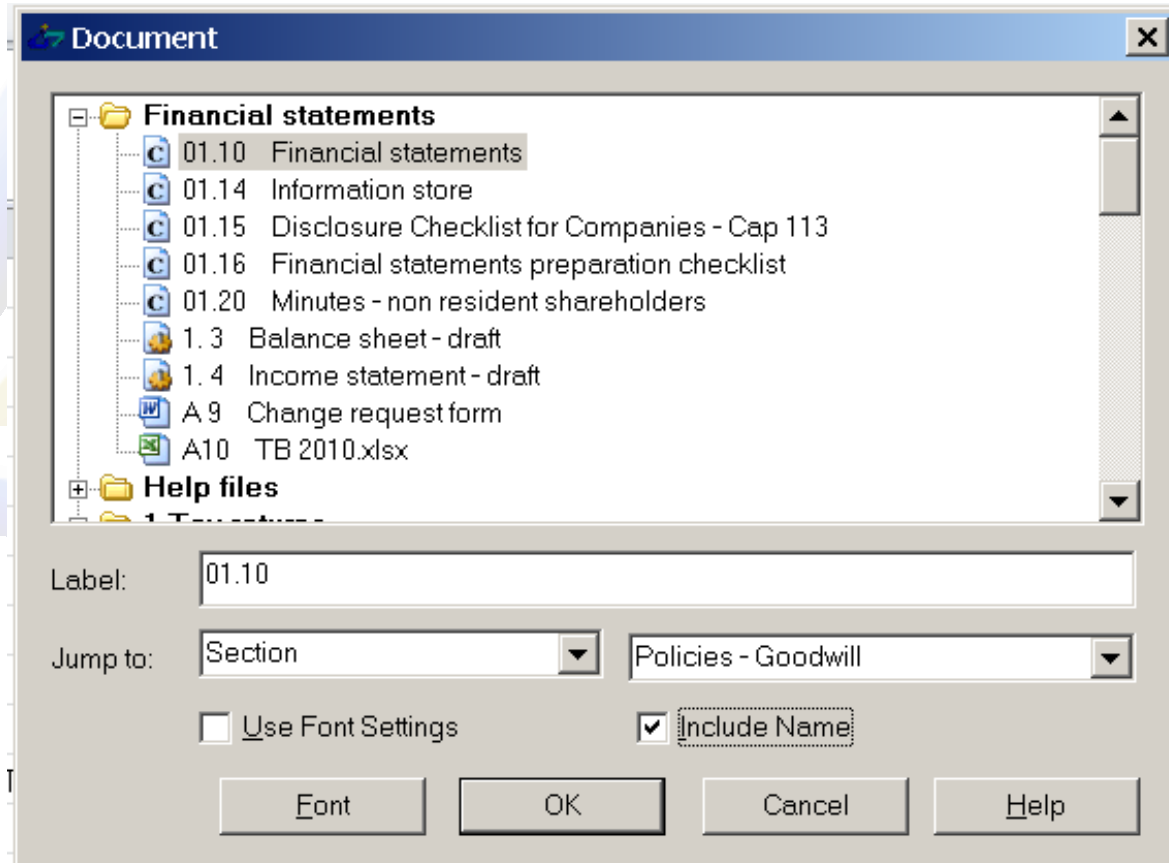
cw\_act("BR", "1020")

282.40

# Document dialog

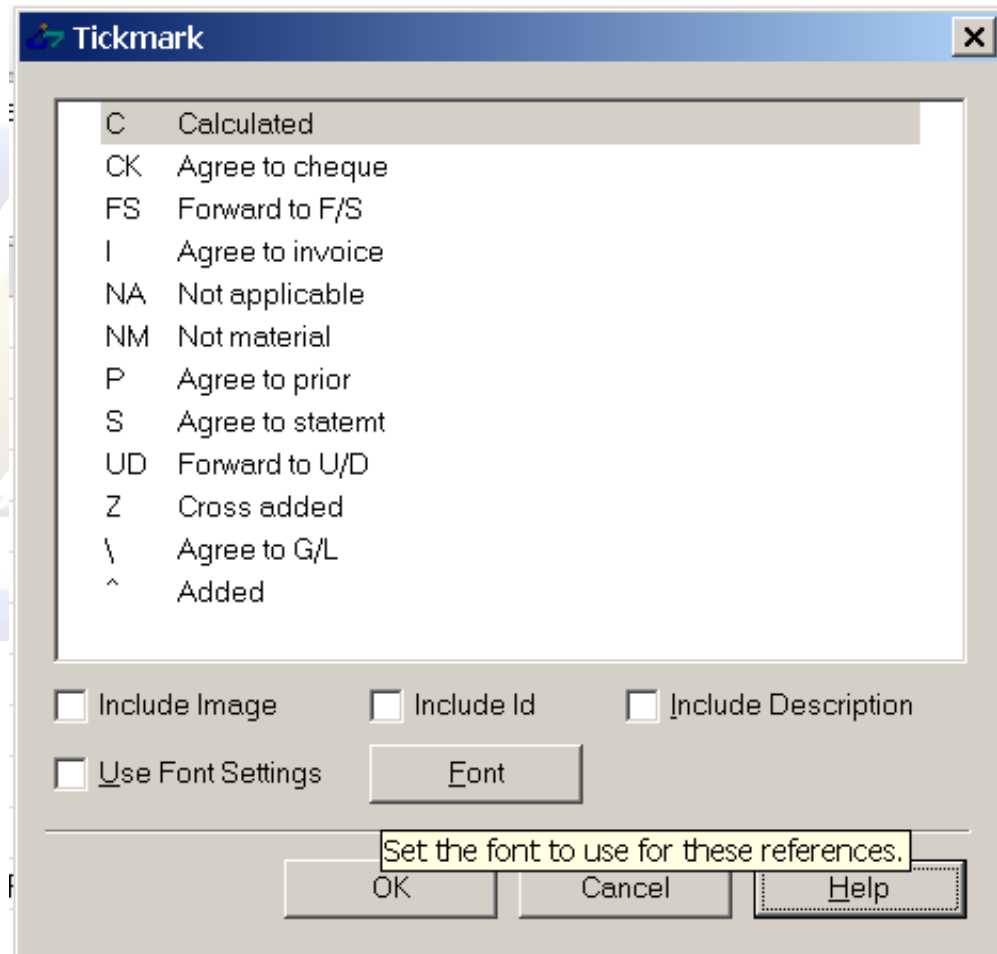
The document dialog enables users to create a link in the Word or Excel document to any document in the active Working Papers client file.

Clicking the link opens the selected document.



# Tickmark dialog

The tickmark dialog enables users to apply tickmarks from the active Working Papers client file to the Word or Excel document.



# Tools menu

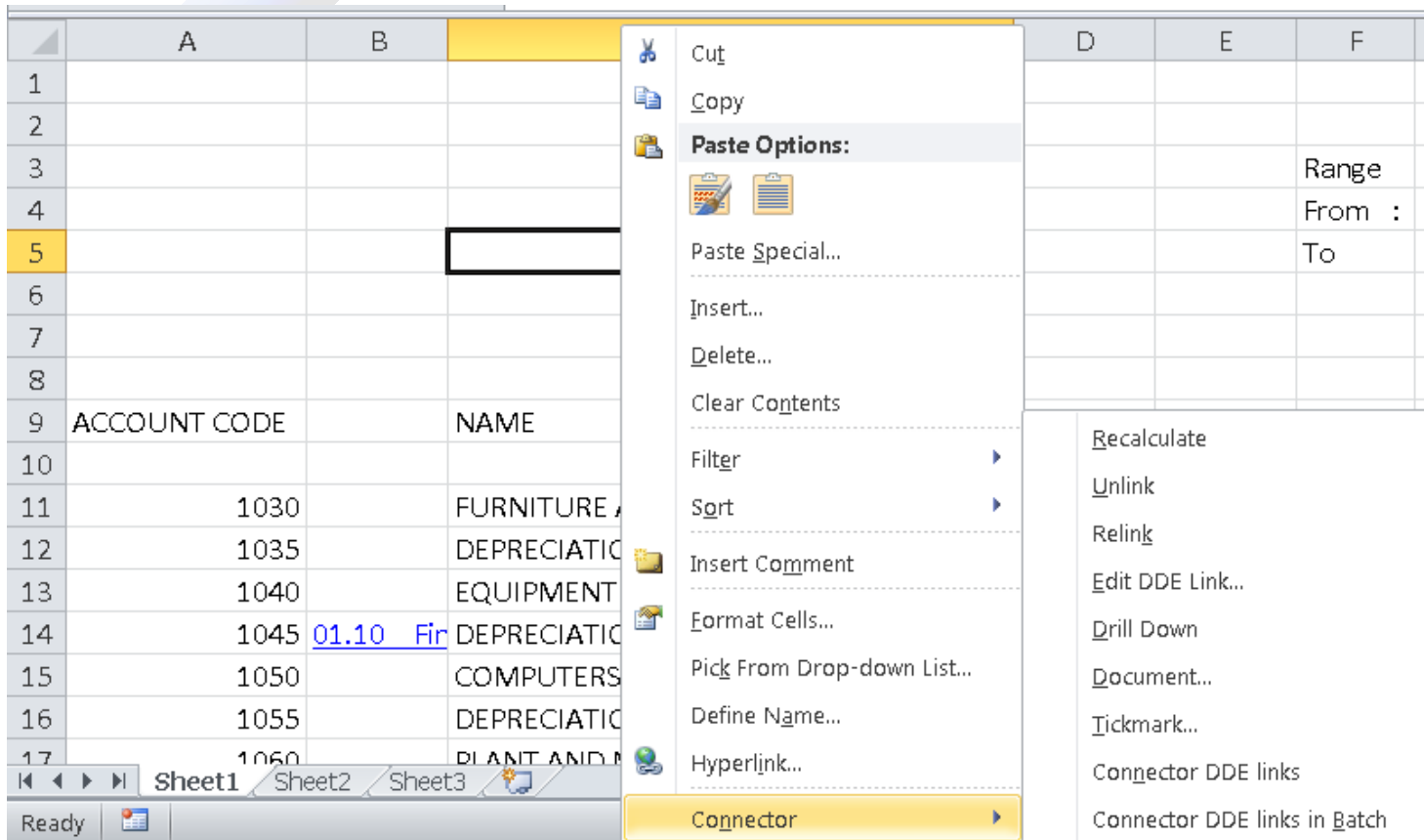
The Tools menu provides additional Connector

The screenshot shows the Microsoft Excel ribbon with the 'Tools' menu open. The ribbon tabs are File, Home, Insert, Page Layout, Formulas, Data, Review, View, Developer, Add-Ins, and STARWizard. The Tools menu is open, showing the following options: Recalculate, Unlink, Relink, Link Paths..., Drill Down, DDE Links, Reference, Convert, Options..., CaseWare Working Papers, and About. The background shows a spreadsheet with columns C, D, E, F and rows 1-9. Row 9 contains headers: ACCOUNT CODE, NAME, and TYPE.

	C	D	E	F
1				
2				
3				
4				
5				
6				
7				
8				
9	ACCOUNT CODE	NAME		TYPE

# Connector context (right-click) menu

These menu options are provided in addition to the Connector toolbar and Tools menu



# Sending a document to a user who does not have Connector

Use the Unlink command to convert links to static values.

